

BOX TYPE DSL SYSTEM

BOX TYPE DSL (ENCLOSED DUCT)

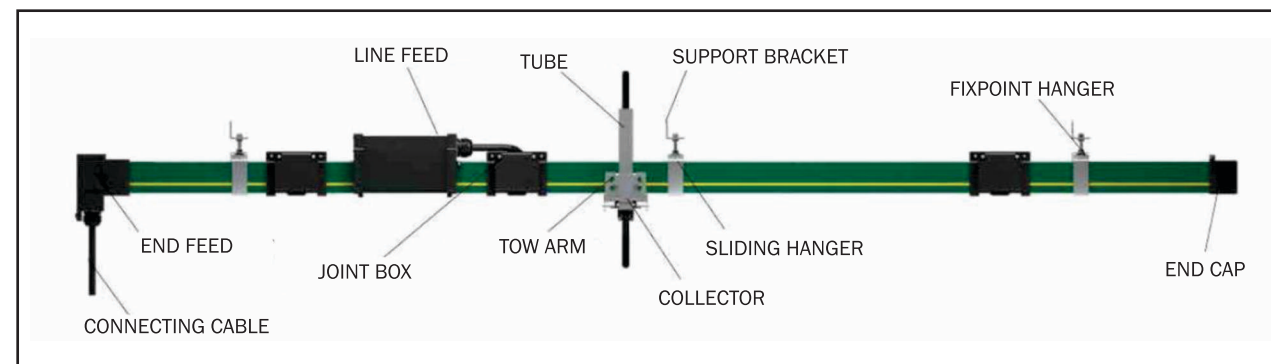
Features:

- Small overall dimensions (compact design).
- Extend an existing line is very easy just adding new tracks.
- The electric feed can be done at the beginning of the line.
- Degree of protection: IP20 (without rubber sealing), IP23 (with rubber sealing).
- Multi conductor.
- Common housing.
- Working temperature :from -30 to 55 (degree centigrade).
- It is very easy to change a track already assembled without moving the rest of them.
- Quick mounting in one passing the line is ready to work.
- These bus bars systems are very compact and efficient in power distribution

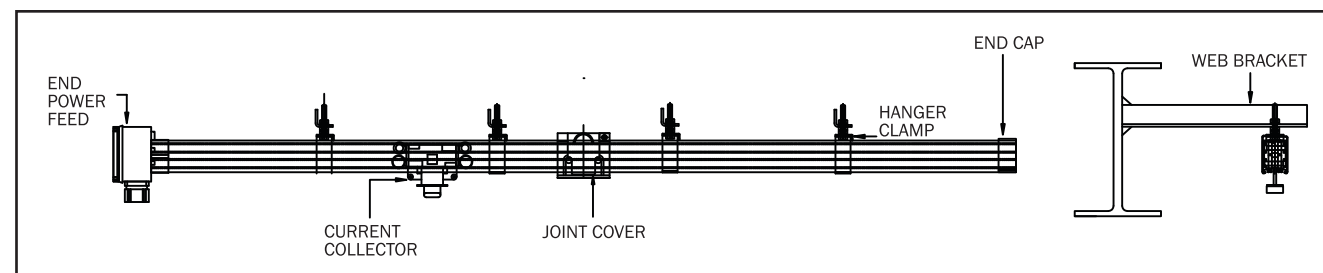
Available Range:

- 40,60,80,100,140, amps are available.
- Working voltage up to 600v.

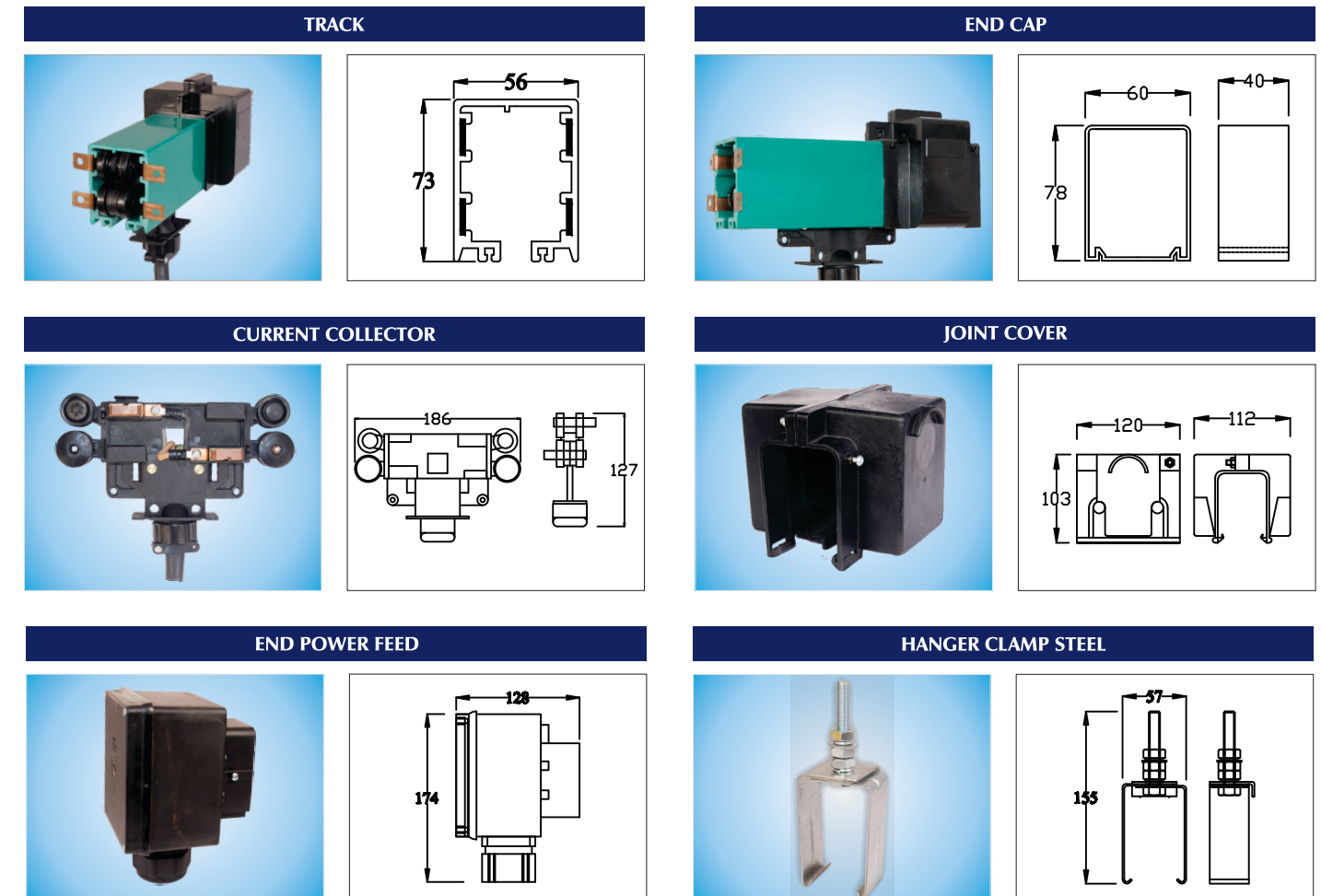
BOX TYPE DSL GENERAL ARRANGEMENT



BOX TYPE DSL SYSTEM LINE DIAGRAM



BOX TYPE DSL SYSTEM



TECHNICAL DATA FOR BOX TYPE ENCLOSED CONDUCTOR BAR SYSTEM

Conductor Bar System	Duct Box Type Range				
Type	Bolted in Type				
"Nominal Current (A) At 100% Duty and 35° C"	40	60	80	100	140
DC resistance (O/M) At + 35° C	0.0034	0.0030	0.0020	0.0017	0.0012
Impedence (O/M) At + 35° C	0.002	0.0017	0.00118	0.0011	0.0007
Voltage Grade [V]	600				
Support Spacing [mm]	1333				
Bar Length [mm]	4000				
Outside Dimensions [mm]	73 x 56				
Permissible Ambient Temperature	-30OC + 55o C (Standard Insulation)				